

**APH Products and Services
for the
Association for Education
and Rehabilitation
of the Blind and Visually
Impaired (AER)
2022 Conference**



AMERICAN
PRINTING
HOUSE 

Braille Solutions

Mantis™ Q40

Keep braille at your fingertips anytime, anywhere with the [Mantis Q40](#), a Bluetooth® keyboard and 40-cell refreshable braille display. With the Mantis, users no longer need to choose between a keyboard or a braille device — at the same time a student or professional is typing on the Mantis, the refreshable braille below the keyboard is providing a multimodal braille complement to the screen reader, making it easier to participate in, and succeed at, school or work. Connect to other devices via USB or Bluetooth, or use the Mantis by itself to read books, edit and manage files, check the date and time, and make basic mathematical calculations. Learn more about the Mantis by checking out this [video](#)!

A close-up photograph of a bright green praying mantis standing on the keys of a black Mantis Q40 keyboard. The mantis is positioned in the center-right of the frame, facing left. Its long, thin legs are spread out, and its raptorial front legs are visible. The keyboard is black with white lettering on the keys. The brand name 'Mantis Q40' is printed in large, green, stylized letters on the front edge of the device.

Mantis Q40

Braille Solutions

Chameleon™ 20

Developed specifically for education, with teachers and school-age children in mind, the [Chameleon 20](#) enhances the classroom experience through innovation with a fun, positive technology experience that reinforces the joys of reading and writing. This sleek, 20-cell refreshable braille display with a Perkins-style keyboard connects to multiple devices via Bluetooth®, and includes an editor, book reader, calculator, clock, and file manager so the device can also be used as a stand-alone notetaker.

BrailleBlaster™

A free transcription software program developed by APH that allows transcribers to provide students with low vision or vision loss with braille textbooks on the first day of class. Download [BrailleBlaster](#) for free today!

Polly – Coming Soon

Created in partnership with ThinkerBell Labs, Polly is an electronic Wi-Fi enabled braille learning device that teaches reading, typing, writing, vocabulary, and spelling in both contracted and uncontracted braille. This device includes a Perkins-style keyboard, an electronic slate, a speaker for instruction and feedback, and an online teacher portal that allows remote access and progress monitoring for educators/parents. Stay in the loop about all things Polly, by joining our [Wait List](#) – be the first to know when Polly is available for purchase!



Braille Solutions

Fun with Braille

A book of entertaining activities designed to provide additional practice for readers who are already familiar with braille contractions. [Fun with Braille](#) has a list of UEB contractions and the activities in which they appear and includes an answer key.

Illinois Braille Series

The [Illinois Braille Series](#) is a classic program for teaching literary braille to former print readers. It includes raised print letters, braille, tracking guidelines, practice activities, writing drills, and a vast variety of reading selections. This two-volume set progresses from uncontracted to contracted braille in 50 lessons.

Quick Pick Braille Contractions

Test your braille knowledge with the [Quick Pick Braille Contractions](#) game! This two-volume set progresses from uncontracted to contracted UEB braille in 50 lessons.

LEGO Braille Bricks

Complete the request form linked to this description and receive [LEGO Braille Bricks](#) for free! Each colorful LEGO brick is molded with studs that correspond to numbers and letters in the braille alphabet and has a corresponding printed symbol or letter. This is a fun and engaging way to teach young children braille!



Braille Embossers

PixBlaster™

The [PixBlaster](#) combines tactile graphics with braille text. This embosser allows users to easily produce double-sided interpoint braille with smooth, rounded dots for improved readability along with industry-leading, high-quality tactile graphics with seven variable dot heights for color representation. Connect to Wi-Fi to translate and emboss documents on the fly from your computer or mobile device using the included PIXie box.

PageBlaster™

APH and HumanWare have partnered to produce a portable and powerful braille embosser with a tractor-fed design that provides smooth paper handling and produces double-sided interpoint braille. Use [PageBlaster](#) to emboss PRN files from APH's Tactile Graphics Image Library or create your own using the included Firebird tactile graphics software.



Low-Vision Solutions

Juno

Magnify on-the-go with this powerful, 7-inch LCD touchscreen handheld video magnifier with Optical Character Recognition (OCR). Designed to accommodate the needs of students and adults with low vision, [Juno](#) is a great magnifying solution for use during work and recreational activities. Juno can capture and process multiple pages of printed text using OCR, giving users the option to either read the document themselves or have the text spoken aloud using text-to-speech (TTS). Plus, Juno's 180-degree rotating barrel camera supports four camera modes (self-view, reading-view, distance-view, and writing/hobby-view), enabling users to complete grooming tasks, view documents, read a bulletin board, fill out a form, sew, and much more! Learn more about Juno's full suite of features in our [Juno Portable Magnifier video](#) and by reading our [Magnification Rocks with Juno blog](#).

Jupiter Portable Magnifier™

The [Jupiter Portable Magnifier](#) is a sleek and compact device that helps users of all ages with low vision or vision loss see the world in high definition. Whether it's in the classroom, workplace, or at home, this powerful magnifier allows you to continue those activities that bring joy to everyday life, while exploring new opportunities for lifelong education. Use Jupiter's three camera modes (reading, distance-view, and self-view) to read a book or prescription bottle label, view a presentation or instructor at the front of the classroom, and complete grooming activities. [Learn more about Jupiter and its contribution to a student's academic success.](#)

Low-Vision Solutions

Video Mag HD™

The [Video Mag HD](#) is a durable handheld video magnifier with a 4.3-inch LCD screen that provides crystal-clear, full-color images by magnifying whatever appears under its auto-focus HD camera by 2x-13x. It is ideal for viewing labels, price tags, receipts, and more.

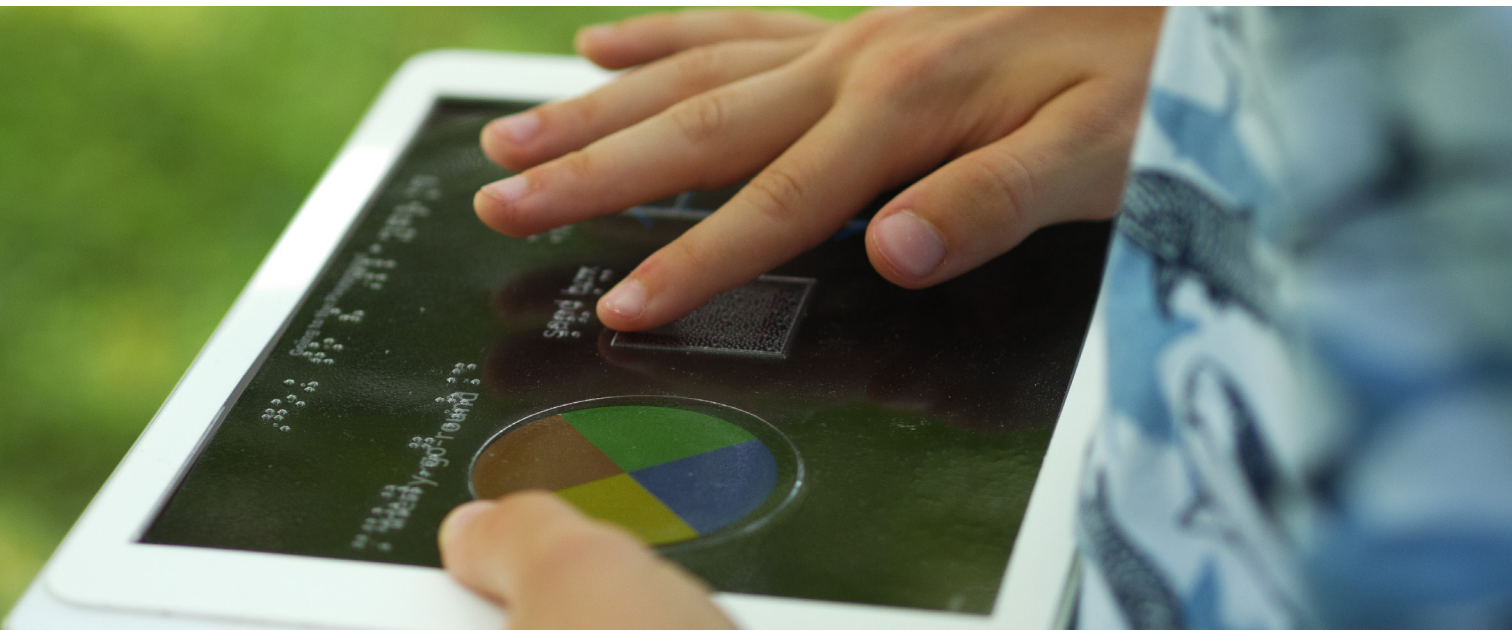
MATT Connect™

The [MATT Connect](#) is a compact, all-in-one magnifier, distance-viewer, and educational Android tablet. Customize your learning experience through your MATT Connect's three interfaces: from simple magnification settings, to pre-loaded and feature-rich software options designed for learners of all ages and skill levels. This powerful device also allows students to magnify a print document, read a book from an online library, conduct internet research, and much more.

Find out which magnifier works best for you by viewing our [Magnifier Comparison Chart](#)!

Going to the Playground (for iPad®)

The [Going to the Playground](#) app for iPad (9.7-inch only) helps young children, ages three to five, learn orientation directions, such as left and right, in and out, and up and down, as they become familiar with the layout of a virtual playground. The app is self-voicing and includes bold and bright colors to further enhance the playground experience.



Mathematics

SlapStack™ Math (for iOS devices)

Practice operations with this FREE, interactive, action and memory math game available for iOS devices from the App Store®. Accessible for all users, the goal of [SlapStack Math](#) is to collect the most points by pulling in the most cards.

Draw2Measure™ Protractor (for iOS devices)

This [FREE app](#) provides an alternative way to measure angles. Users can place an angle over the screen of a phone or tablet and trace along the sides of the angle with a fingertip or stylus. It records the locations of the sides and then calculates the angle. For objects that may not fit on a screen, users can find measurements by rotating the device itself, which utilizes a built-in gyroscope sensor to measure the angle.

Math Robot™ (for iOS devices)

Available in the App Store, [Math Robot](#) offers a flashcard format as well as a smart “know-it-all” math robot which provides fun drills and simple math problems. This app is both self-voicing and accessible with VoiceOver on Apple devices.

Practice2Master Fractions (for iOS devices)

Available in the App Store, [Practice2Master Fractions](#) is designed to help students become proficient in fraction calculations. It supplements teachers’ instruction by providing students with an unlimited number of problems to practice.

AnimalWatch Vi Suite (for iPad)

The [Animal Watch Vi Suite](#) is a package that includes a free app available from the App Store with accompanying braille and print materials. Students working at the pre-algebra level (grades 5-7) can build their math word problem solving skills while learning about endangered and invasive species such as the black rhino, cheetah, gray wolf, and white shark.

Mathematics

Cranmer Abacus

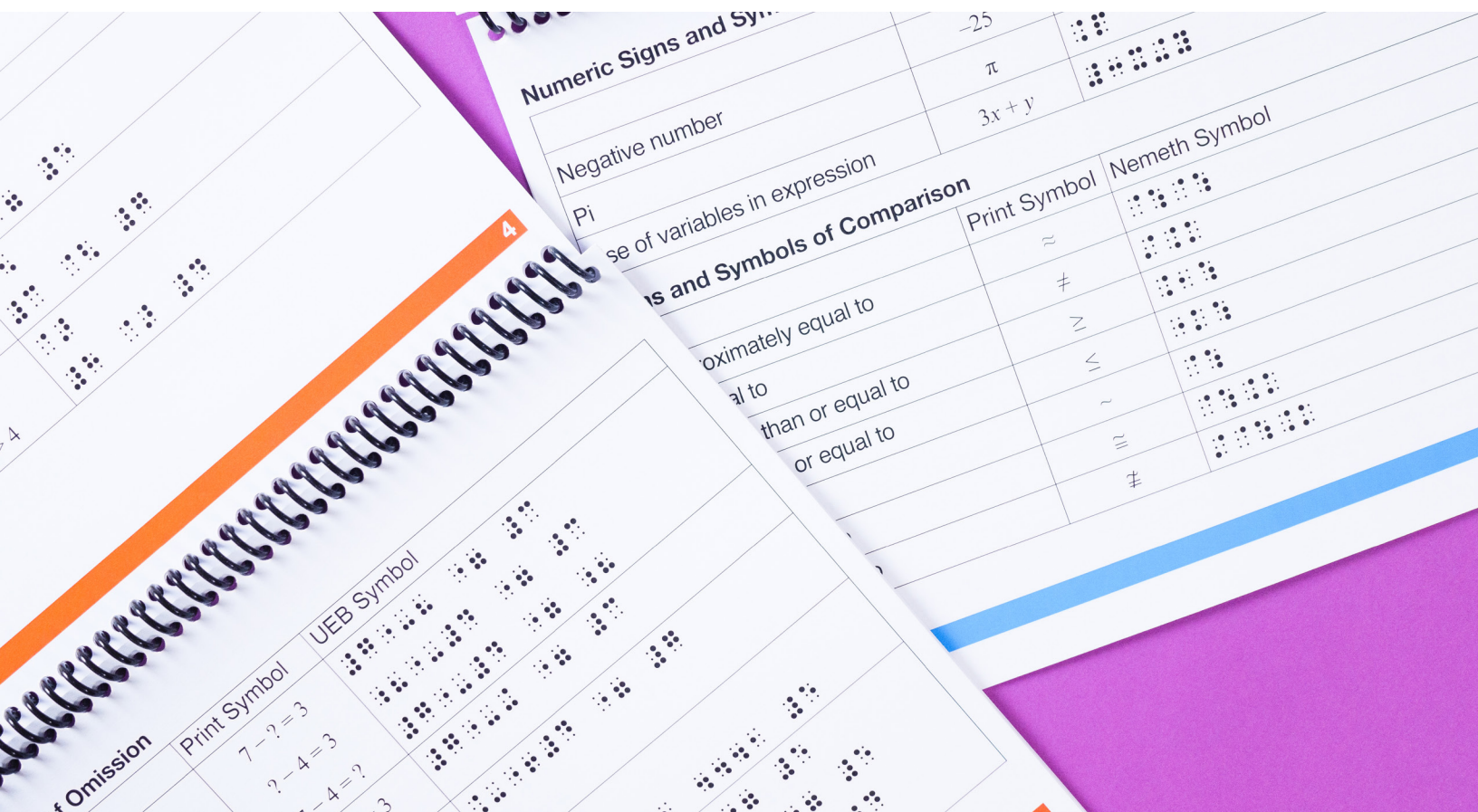
A specially designed [13-rod abacus](#) that keeps beads in position once they have been set. The frame measures $6 \frac{1}{8} \times 3 \frac{1}{4}$ inches and the bead diameter is $\frac{3}{8}$ inch.

Graph Benders

Create/plot graphs and tactile diagrams/charts that are tactile, visual, and durable! [Graph Benders](#)' flexible strips and point symbols (triangles, circles, squares) can be applied directly to paper and are an excellent way for students to demonstrate their mastery of math or science concepts.

Math Symbol Reference Booklets

The [Math Symbol Reference Booklets](#) consists of the Nemeth Code Reference Booklet and the UEB Companion Reference Booklet. Each booklet contains a list of Nemeth or UEB math symbols, along with an explanation of what each symbol represents. The symbols are broken down into three levels of difficulty: beginner, intermediate, and advanced.



Early Childhood/CVI

The Caterpillar

Initially produced in 1993, [The Caterpillar](#), an On the Way to Literacy (OTWL) series classic, now contains a completely rewritten text with exciting tactile illustrations containing textures and objects rather than the raised line drawings used in the original book. In addition, the new text has received colorful and enhanced visual illustrations, an updated illustrated cover, and a binding instead of a ring binder. This read-aloud tactile storybook with large print/braille text (contracted UEB) is designed to assist young children in developing key literacy skills such as listening comprehension, phonological awareness, oral language, and object/shape recognition.



Early Childhood/CVI

Laptime and Lullabies

Storybooks

Parents and teachers of children up to three years of age can use [Butterflies and Where's Little Fuzzy? Storybooks](#) (both with tactile, braille, and print components) to facilitate the skills necessary to build an understanding of language before beginning to read the written word. These skills include: evaluating one's environment; understanding reciprocal communication; developing listening skills; and more.

Where's Little Fuzzy: Takes the reader on an adventure, learning about textures through introductions to Little Fuzzy and his friends hiding on each page. See if you can find them! Learn to open a door, reach into a pocket, or push Little Squeaky to hear a fun sound!

Butterflies: With this fun book of opposites, learn to navigate the page to find the Butterflies! Some are big, some are bumpy, some are hiding, and some have many friends to play with. Each butterfly is attached with hook-and-loop to allow manipulation. Butterfly finger puppet included. Replacement parts available.

Parent Handbooks

A set of [18 paperback handbooks](#) to help parents incorporate developmental skills into everyday activities. Booklets 1-4 are recommended to be read consecutively, providing background information about visual impairments and infant development. Booklets 5-18 cover various topics through the toddler years with suggestions and support for developing concepts necessary for independence and emergent literacy.

Early Childhood/CVI

Animal Recipes: Farm Set

Designed for elementary students who have low vision and CVI, [Animal Recipes](#) is the first in a series of products that help students understand the salient features of animals as they build a cow, sheep, horse, goat, pig, goose, and rooster. Salient features are the key “ingredients” that make things unique (i.e.: How do you tell a pig from a cow?).

LED Mini-Lite Box

Smaller, lighter, and less expensive than its larger counterpart, the [LED Mini-Lite Box](#) is an all-inclusive, person-centered learning tool for students of any age who have low vision or vision loss. Students with CVI and other disabilities can benefit from the Light Box Materials kits and commercially available mounts that can be attached to the LED Mini-Lite Box. Individual items from each level of Light Box Materials can be used with it. An optional carrying case is available. Also available separately are Mini-Lite Box Transparent Overlays which may be used to promote light awareness, improve contrast and visibility, and introduce color matching.



Early Childhood/CVI

CVI Companion Guide

Designed to assist parents and professionals, the [CVI Companion Guide](#) provides information on the social and emotional needs of children with CVI. This guide assists parents and service providers to navigate current research regarding the impact of brain injury and how it may impact visual processing, social interaction, and more. The book also delves into documenting a child's current level of functioning with their CVI diagnosis and organizing a plan to work on skills needed to function in everyday activities.

Rigby Nonfiction Kits 4 & 5

APH's [Early Braille Trade Books](#) combine commercially available books with braille labels for beginning readers. These kits include books, braille labels, and access to an interactive website. The Rigby series provides nonfiction books that are aligned with national standards and provide motivating texts that systematically build high-frequency words and reading skills.

Tactile Theme Pack: In My Yard – Coming Soon

Create tactile books about a child's discoveries of various plants, animals, and insects living in their backyard or local park using the tactile items and textures provided in [Tactile Theme Pack: In My Yard](#). The items in this pack can also be used "right out of the box" for early learning activities fostering development of concepts, tactual discrimination, and exploratory skills.

Health and Science

Health Education for Students with Visual Impairments: A Guidebook for Teachers

This guidebook was specifically developed for teachers who provide instruction to students with low vision ages five through twenty-one. [Health Education for Students with Visual Impairments](#) does not provide a comprehensive curriculum that covers all areas of health education; rather, it provides ways to make specific aspects of health education accessible to students with visual impairments.

Health Education Tactile Graphics

The tactile graphics presented in this product correspond with the anatomical and physiological systems presented in *Health Education for Students With Visual Impairments: A Guidebook for Teachers*. The [Health Education Tactile Graphics](#) collection includes the skeletal, muscular, nervous, circulatory, lymphatic, respiratory, digestive, excretory, endocrine, and reproductive systems.

Build-A-Cell

While all cells share certain structural parts, cells of different evolutionary origins have components that set them apart from each other. [Build-A-Cell](#) helps students who are blind or have low vision understand the fundamental characteristics of, and differences between, various cell types by providing a full color, tactile, and interactive representation of the internal and external structures of bacterial, animal and plant cells.



Coding/Engineering/Technology

Code Jumper™

Originally designed by Microsoft® and developed by APH, [Code Jumper](#) teaches computer coding and programming skills through a unique, physical system. Code Jumper technology takes block coding off the screen and puts it on the table in front of you, making it accessible and fun for the whole class. Brightly colored plastic pods with oversized buttons and knobs are connected by “jumper cables” (thick cords) to physically create computer code that can tell stories, music, and even crack jokes.

Accessible Code & Go® Mouse

The [Accessible Code & Go Mouse](#) provides a hands-on introduction to coding concepts and tactile graphics as students program Colby the mouse to race through the maze toward the cheese. Students will learn problem-solving, critical thinking, if-then logic, O&M skills, route planning, and much more.

RC Snap Rover

Make projects that move with [RC Snap Rover](#)! Children will learn about electric switches, radio perception, gear movement, Morse Code, and more as they snap together colorful Snap Circuits parts to build an RC Snap Rover that can zoom across any surface with the included wireless remote control. Construct 25 projects like a remote-controlled rover, a light following rover, water detector, and more.

CodeQuest™ (for iPad)

Play [CodeQuest](#) and help your astronaut move across a grid-style game board to his spaceship, so that he can explore the galaxy. In each of the game’s thirty levels, players start at row 1, column 1, and must program a route for the astronaut to follow to return to his spaceship while avoiding obstacles. Along the way, players also learn coding concepts such as problem-solving, planning, computational thinking, loops, and sequencing.

Color-by-Texture Marking Mats

Make art activities fun with [these colorful mats](#) for children! Simply place a chosen mat underneath a coloring page and rub with a waxed crayon. A wider assortment of textures and shapes can be generated by using different coloring techniques as described in the accompanying instruction booklet.

TactileDoodle™

The [TactileDoodle](#) is a low-tech drawing board used to generate tactile, raised-line graphics quickly and independently to convey a variety of concepts or art within the classroom and at home, including:

- Demonstrate a variety of concepts related to science, math, geography, etc.
- Illustrate spatial concepts and simple maps.
- Practice handwriting skills.
- Play interactive games, like tic-tac-toe.
- Accommodate more open-ended, artistic drawing activities.
- Practice tracing skills within a stencil or around a 3D object.
- Provide tactile illustrations during teachable moments.

Picture Maker Wheatley Tactile Diagramming Kit

Create maps, charts, shapes, and your own tactile masterpieces on the [Picture Maker](#). The Picture Maker includes a felt covered board and a variety of colorful hook-loop backed pieces that attach to the board in an infinite number of patterns.

Fine Arts

All-in-One Board

This multi-platform, easily adjustable board by APH can be used in the classroom for learning activities with students of all ages. Use the [All-in-One Board](#) in combination with hook fastener accessories, dry erase markers, and magnetic pieces (pieces can be homemade, obtained from APH, or ordered commercially). The board can be positioned at many angles, from nearly flat to fully upright. Also available in a smaller size, [All-in-One Board: Student Model](#).

Feel 'n Peel Sheets, Carousel of Textures I & II

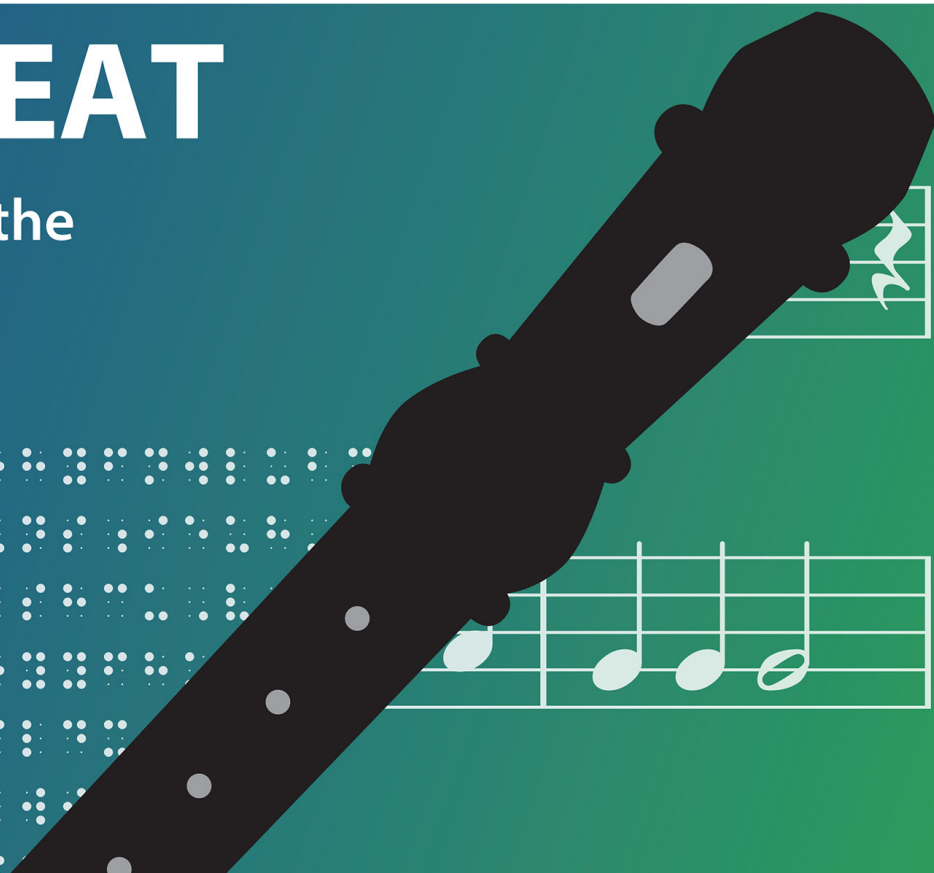
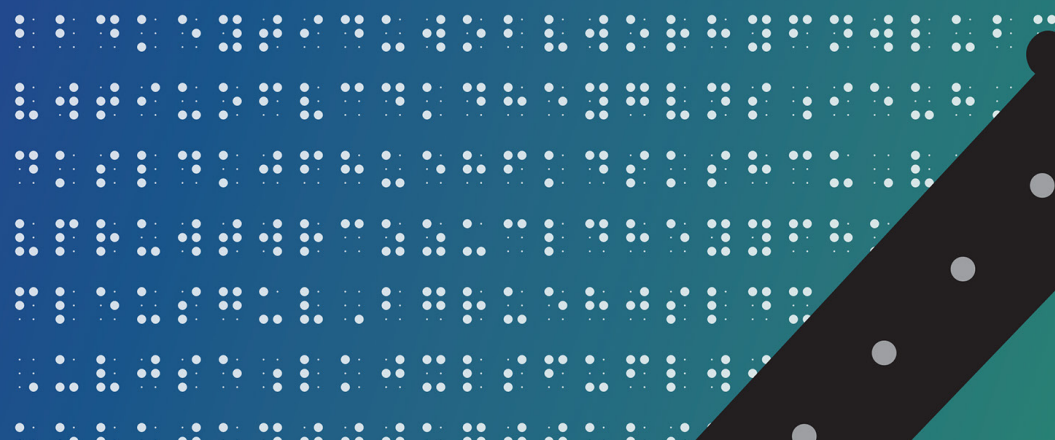
These colorful, [tactile sheets](#) provide a simple way to create graphs and adapt games and art projects.

Feel the Beat

The lessons in this curriculum teach Music Braille Code, and focus on reading, playing, and memorizing measures through the use of a soprano recorder. [Feel the Beat](#) was developed by Christine Short, who was a co-recipient of the “Louis Braille Touch of Genius Prize” in 2011.

FEEL THE BEAT

Lesson Plans for Teaching the Music Braille Code with the Soprano Recorder





Welcome to the [APH ConnectCenter](#)! This website offers FREE curated advice and resources to assist children, parents, adults, and job seekers who are blind or low vision, and their associated professionals. Through this website, you are able to access these ConnectCenter resources and much more:

- [FamilyConnect](#): Offers support and resources for families of children who are blind or have low vision.
- [CareerConnect](#): Employment information, tools, and guidance for job seekers who are blind or have low vision.
- [VisionAware](#): Designed for adults and seniors who are living with vision loss.
- ConnectCalendar: For use by the entire blindness field to find and promote events, all in one place. [Promote and share](#) your organization's event by adding it to the Calendar or [discover upcoming events](#).
- [APH ConnectCenter Transition Hub](#): Planning for graduation and life after school brings up a lot of questions. Find information about transition programs that emphasize empowerment, career exploration, and work experiences for teens and young adults who are blind or have low vision.

Have questions related to blindness or vision loss? Call APH's Information & Referral Hotline: (800) 232-5463 or e-mail us at connectcenter@aph.org.

APH Press

American Printing House for the Blind

[APH Press](#) carries on the legacy of AFB Press as the leading publisher in the field of blindness and visual impairment. APH Press publishes educational content, including textbooks for teacher preparatory programs, in the field of blindness and visual impairment to support teachers, families, and other professionals. Recent releases include:

- [Guidelines and Games for Teaching Efficient Braille Reading](#): This second edition commemorates the 40th anniversary of the book's original release. This book has been updated to reflect advances in technology that have made braille more accessible in a digital format, such as refreshable braille devices, digital notetakers, and translation software.
- [Babies with CVI: Nurturing Visual Abilities and Development in Early Childhood](#): Presents specific approaches, strategies, and activity suggestions that families and visual impairment professionals can use to meet the unique learning needs of a child with CVI. This guide includes the history and best practices related to the treatment of CVI in children from birth to 36 months.

Services/Resources

APH Hive

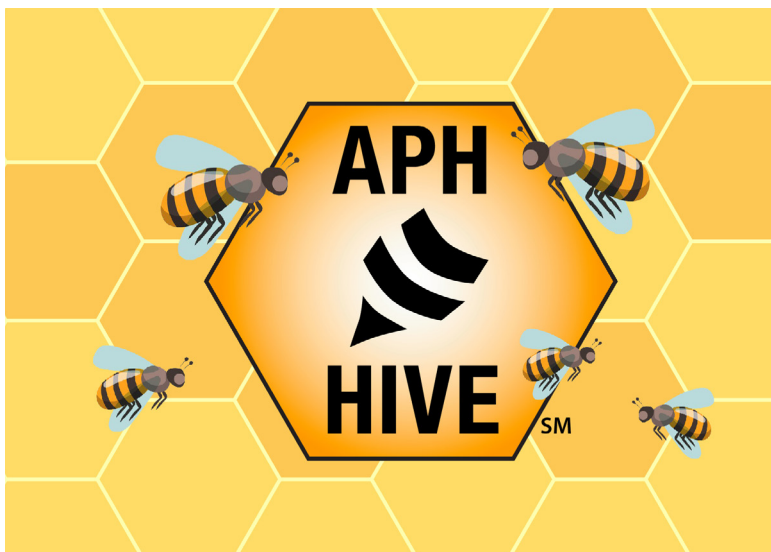
The [APH Hive](#) offers a variety of free online courses for vision professionals and educators to increase their ability to respond to the needs of students with low vision. This “one-stop” for professional development offers ACVREP continuing education units upon successful completion of a course. Inside the APH Hive are four categories of content: Assessment, Early Childhood, Core Curriculum, and Expanded Core Curriculum.

ExCEL Academy

[ExCEL Academy](#) provides online learning opportunities in the form of free and engaging webinars for students with a variety of abilities. Students are invited to [register free for the Virtual ExCEL STEM Camp](#) which runs from June 7 – August 5.

Access Academy

[Access Academy](#) is your one-stop resource for the meaningful education and training webinars you need to get the most out of APH products and services. From tutorials on new products, to information on resources, services, and programs: our goal is to give you the info you need for home, the classroom, and the workplace.



Services/Resources



NIMAC

Created by IDEA 2004, [NIMAC](#) is a federally funded, online file repository of source files in the NIMAS format. Here, authorized users can access more than 69,000 K-12 NIMAS files for use in the production of accessible formats for students with disabilities.

ABIDE: Accessibility. Belonging. Inclusion. Diversity. Equity

These are the tenets that guide the work we do at APH. [APH ABIDE](#) hopes to increase awareness of accessibility and usability obstacles and teach others how to remedy those issues; highlight diverse trailblazers; help others understand why diversity and equity are essential; and foster a sense of belonging inhouse and throughout our community and the field of education.



ABIDE

Accessibility • Belonging •
Inclusion • Diversity • Equity



**Thank
You for
Supporting
APH**

As a not-for-profit, 501(c)(3) organization, APH values our thoughtful, informed donors who ensure that we are able to serve a growing population of people of all ages who are blind or low vision – across the nation and around the world. Our programs, initiatives, services, and products empower people with vision loss to live as independently as possible. Your contribution makes that happen. You are a part of the APH community – and we are truly grateful for your partnership. Please donate at bit.ly/donateaph or contact the APH Development Department by phone at 502-899-2291 or email at development@aph.org.

American Printing House for the Blind, Inc.
1839 Frankfort Ave. • Louisville, KY 40206
502-895-2405 • 800-223-1839 • aph.org